



***Building World Class  
High Tech Facilities  
Together !!***

**Acter**  
聖暉工程

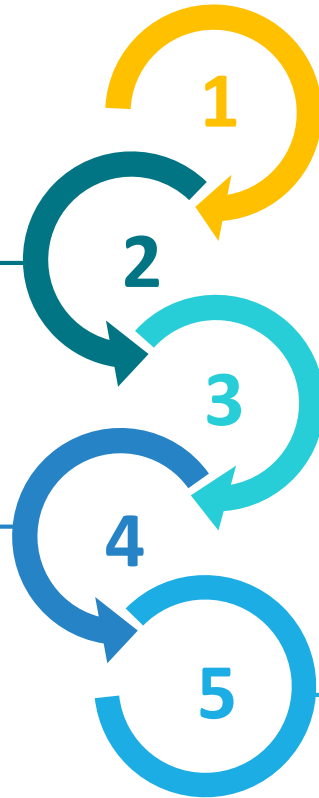
March, 2026

- Founded in 1979, HQ in Taichung, Taiwan
- Taiwan Stock Exchange **#5536**, market value over **3B US dollars**
- Sales Revenue **1.3B USD** in 2025
- >70% business from semiconductor industry
- 2,300+ employees in 10 countries



Local team offering close-range services.

complete supply chain



instant response






Smooth communication in local culture

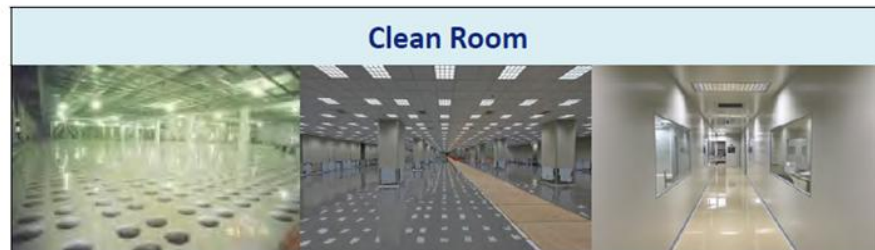
Rapid completion, excellent after-sales service



# What We Do

## Cleanroom & MEP

HVAC& CR	FP	Piping	Electrical	
				
<ul style="list-style-type: none"><li>•Refrigeration equipment</li><li>•Cooling tower</li><li>•Central air-conditioning</li><li>•Fresh air</li><li>•Air duct</li><li>•Air conditioning water</li></ul>	<ul style="list-style-type: none"><li>•Fire hydrants and fire extinguisher</li><li>•Emergency evacuation lighting</li><li>•Spray / smoke</li><li>•Fire detection</li><li>•Emergency broadcasting</li><li>•Fire pump / monitoring</li></ul>	<ul style="list-style-type: none"><li>•Water and drainage</li><li>•Production of water / wastewater</li><li>•Production of soft water system</li><li>•Recovery of water / rain drainage</li><li>•Process Supporting System</li></ul>	<ul style="list-style-type: none"><li>•10kV power supply</li><li>•High and low voltage power supply</li><li>•Diesel generator</li><li>•Lighting / socket</li><li>•Telephone network</li><li>•Ground / power distribution</li></ul>	<ul style="list-style-type: none"><li>•CCTV monitoring</li><li>•Access card</li><li>•POWER SCADA</li><li>•FMCS control</li><li>•Telephone network</li></ul>



# How We Operate

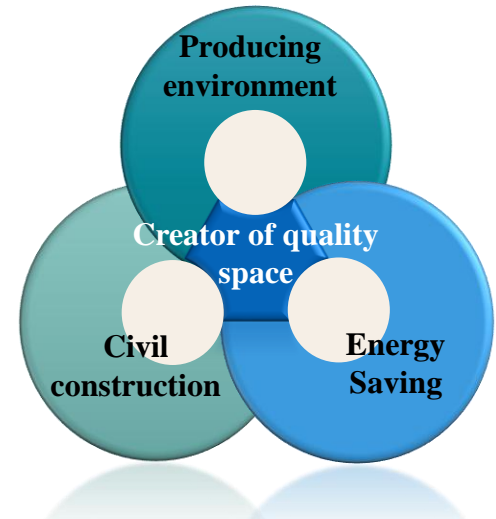
Integrate core skills and provide comprehensive services

## EPC turnkey model

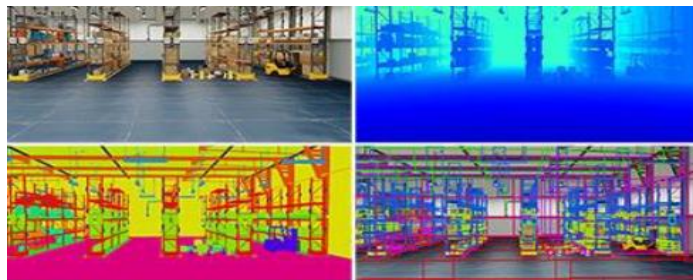


Engineering Procurement Construction Commissioning

- Flexible cooperation with local partners
- Integrated management to reduce risk and accelerate delivery
- Strong and close relationship with clients



- **30+ years** of experience in semiconductor fabs
- Existing **vendor codes** with major Taiwan clients
- Advanced digital tools: **BIM, 3D modeling, Digital Twin**
- Proven ability to deliver **on time, on budget**
- Strong **safety culture** and **ESG compliance**



Synthetic Data Generation

Layout Planning



Process Simulation



Remote Monitoring



# Track Record (Semiconductors)



TSMC F15 P1 Office MEP  
Mechanical Projcet

Total RT : 4,690 RT

High Voltage power supply : 5,500 KVA

Services : EPC

Micron F02a + F02b Mechanical and  
HVAC Program

Area : : 1,818,859 ft<sup>2</sup>

Total RT : 8,900 RT

Services : EPC

L-8F Air Conditioning and Built-in Clean Room  
New Construction

C/R Levels : CLASS 1K/100K (ISO class 6/8)

C/R Area : 155,483 ft<sup>2</sup>

Services : EPC

# Why TSMC Trusts Acter

- Long-term collaboration with TSMC across multiple fabs
- Meeting the **highest standards** in cleanroom construction
- Delivering **mission-critical** projects **on time**

owner	Project Name
TSMC	F14P7 parking solar system installation project
TSMC	Solar energy systems are installed on the roof of the F15B office building and the bus shelter
TSMC	F15P5 temporary Office MEP
TSMC	F15 P1 Office MEP Mechanical project-Tower
TSMC	F15 P1 OFFICE MEP _ Kitchen Package
TSMC	F15 P1 Office MEP Mechanical project-(CCD 、podium 、 Office)
TSMC	FAB14 office Testing Cleanroom and Utility Package
TSMC	F22 Office Building MEP Project
TSMC	Nanke Factory Logistics Center Turnkey Project



Taichung Factory



Tainan Factory



Kaohsiung Factory



MEP new project in Zhuke Longtan Park of **VisEra**



Clean room construction project of **TONG HSING**



Phase I expansion project of Yongfeng Factory in **Grape King bio**



The new E&M and HVAC of **China Medical University Hospital**



**ChipMOS** Cleanroom ISO Class 6 construction project 43,110 ft<sup>2</sup>



**Wiwynn** Nanke Factory 1F2F expansion project



New plant air conditioning of **EirGenix**



E&M and HVAC of in Kaohsiung Software Park Incubator of **Foxconn**

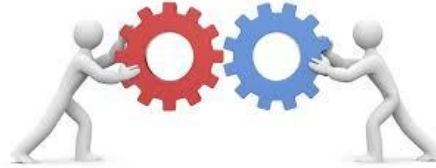
# Other Clients Pool



GlobalWafers Co., Ltd.  
環球晶圓股份有限公司



# Our Value to You - Complementing Partnership



**1+1=3**

*YOU + Acter =  
Faster, safer, cost-optimized  
Advanced Manufacturing  
Facilities*

## Your Strengths

- Licensed **Special Contractor** with strong local presence
- **Material Supplier** in the U.S.
- Permit compliance, and workforce management
- Proven record in large-scale U.S. projects

## Acter's Strengths

- Semiconductor & High Tech cleanroom expertise
- Specialty MEP and process utility systems
- Taiwan Clients vendor code



## Question and Answer

---



---

**Acter**  
聖暉工程

[www.actergroup.com](http://www.actergroup.com)



Thanks